



Inspired by nature

Carpets with Cashmere goat hair





ABOUT **tretford**

Our passion

tretford is high quality carpeting that is made in Germany with natural materials – for a healthy living and working environment. Our carpet's unique product features, along with its proven quality, have established a brand identity that is fueled by our passion. For more than 60 years now, we have been manufacturing our flooring – partly by hand – with Cashmere goat hair in Wesel on the Lower Rhine. In the meantime, the brand name "tretford" has evolved into a synonym for this owner-managed company; it stands for boldly colored, high-quality textile flooring with a characteristic texture.

Our philosophy

Sparing and gentle use of natural resources along with responsible business practices shape our corporate behavior. tretford puts ecological and social responsibility at the heart of its business. We are making strides towards sustainable manufacturing with products made exclusively of natural, recycled or biodegradable materials.

tretford's special feature

Carpets by tretford, which feature the characteristic ribbed design, are available in 45 colors that can be combined to suit the style of your choice. Countless designs can be created and realized thanks to non-fraying materials. And since tretford carpets have a positive influence on the indoor climate, they are ideal for living and working environments.

Our carpeting owes this beneficial effect to its main component, the exquisite top hair of the Cashmere goat with its hygroscopic properties. Like practically no other material, it can absorb moisture from the air only to release it back into the room environment as needed. Moreover, this natural raw material also bonds fine dust particles thanks to the scaly structure of goat hair. This is good news for allergy sufferers since the indoor "dust load" is many times lower than with smooth floors. And even beyond the underfoot warmth it provides, carpeting with Cashmere goat hair is also dirt repellent, absorbs sound and can be expected to have a long service life.

Our products largely consist of the long top hair of the Cashmere goat; indeed, some of our carpet lines boast pile material with up to 80% goat hair. We use the hair of highland goats from Inner and Outer Mongolia. In fact, we rely on renewable raw materials not just for our main carpet component but across the board. The processed virgin wool we use, the jute we use, and the natural latex we use as an adhesive bed for installing some of our products have in common that they are all renewable, natural materials. Cheviot sheep, which graze mainly in Europe, provide the soft virgin wool we use. But we also use recycled materials to manufacture tretford carpeting. The backing of our carpet tiles, for example, is made of polyester fleece, which is partly made of recycled fibers.

OFFICE & COMMERCIAL



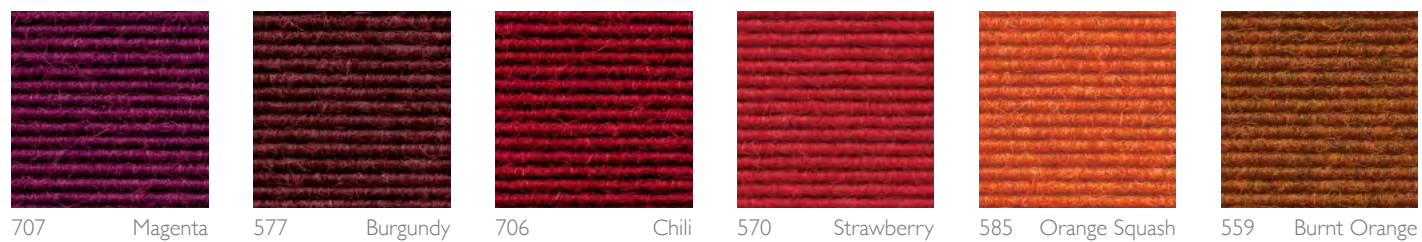
OFFICE

ARCHITECTURE

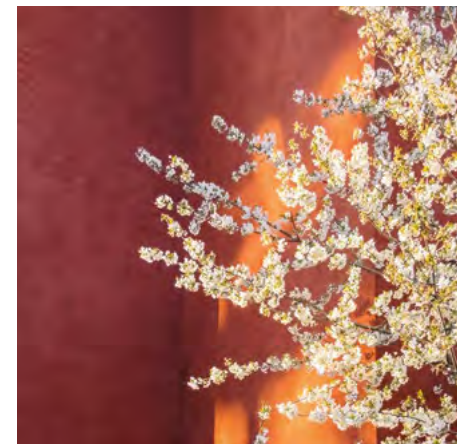
Interlife tiles

tretford for commercial buildings combines all the advantages of natural cashmere goat's hair with the extreme durability of nylon. It reduces sound reverberation in shared workspaces and dramatically diminishes noise transfer through floors caused by footfall or impact.

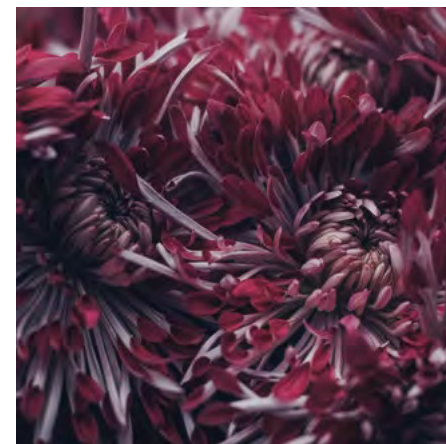
The natural properties of cashmere goat's hair absorb fine particulate dust matter, creating a healthier and safer working environment. The low maintenance carpet is also highly durable, even when used with castor chairs.



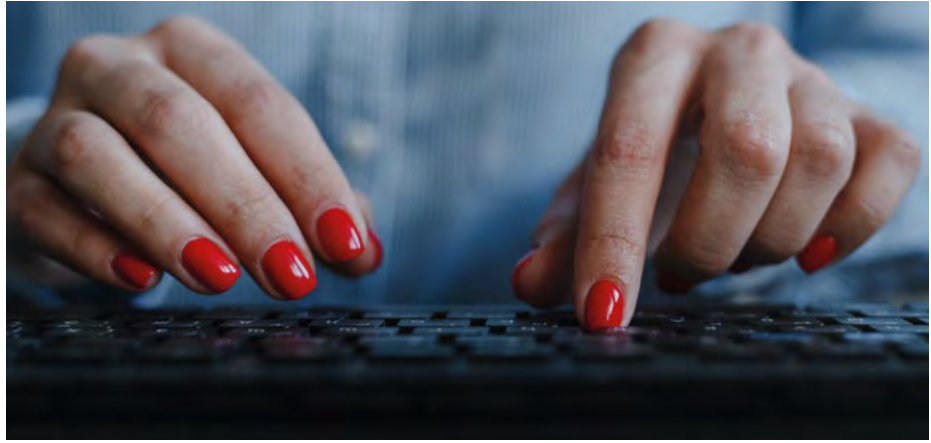
Interlife roll



Interlife tiles



Interlife roll



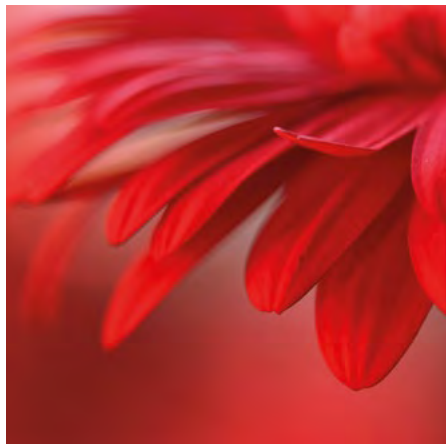
Interlife tiles



Interlife roll



Interlife roll



custom-designed rug

De Rotterdam Scagliola Brakke | Theater Kunstmin Dordrecht | Akzo Nobel Amsterdam | NGV Triennial | Chassé Theater Breda | DIPF Institut Frankfurt



OFFICE & COMMERCIAL



Interlife tiles

COLORS
CREATE MOOD

Just like the air we breathe, we need color in our lives. Colors create mood and atmosphere: peaceful, relaxing or stimulating. In the same way that seasons elicit very different moods in us.

The use of color in the floor coverings and tabletops in this new office is concentrated around the atrium and is key to each floor. Every floor has its own color tone.

- 
 514 Bilberry
- 
 517 Riviera
- 
 575 Cornflower
- 
 567 Lagoon Blue
- 
 520 Damson
- 
 584 Blackberry



custom-designed rug



Interlife tiles



Interlife round area rug



Interlife tiles



Interlife roll

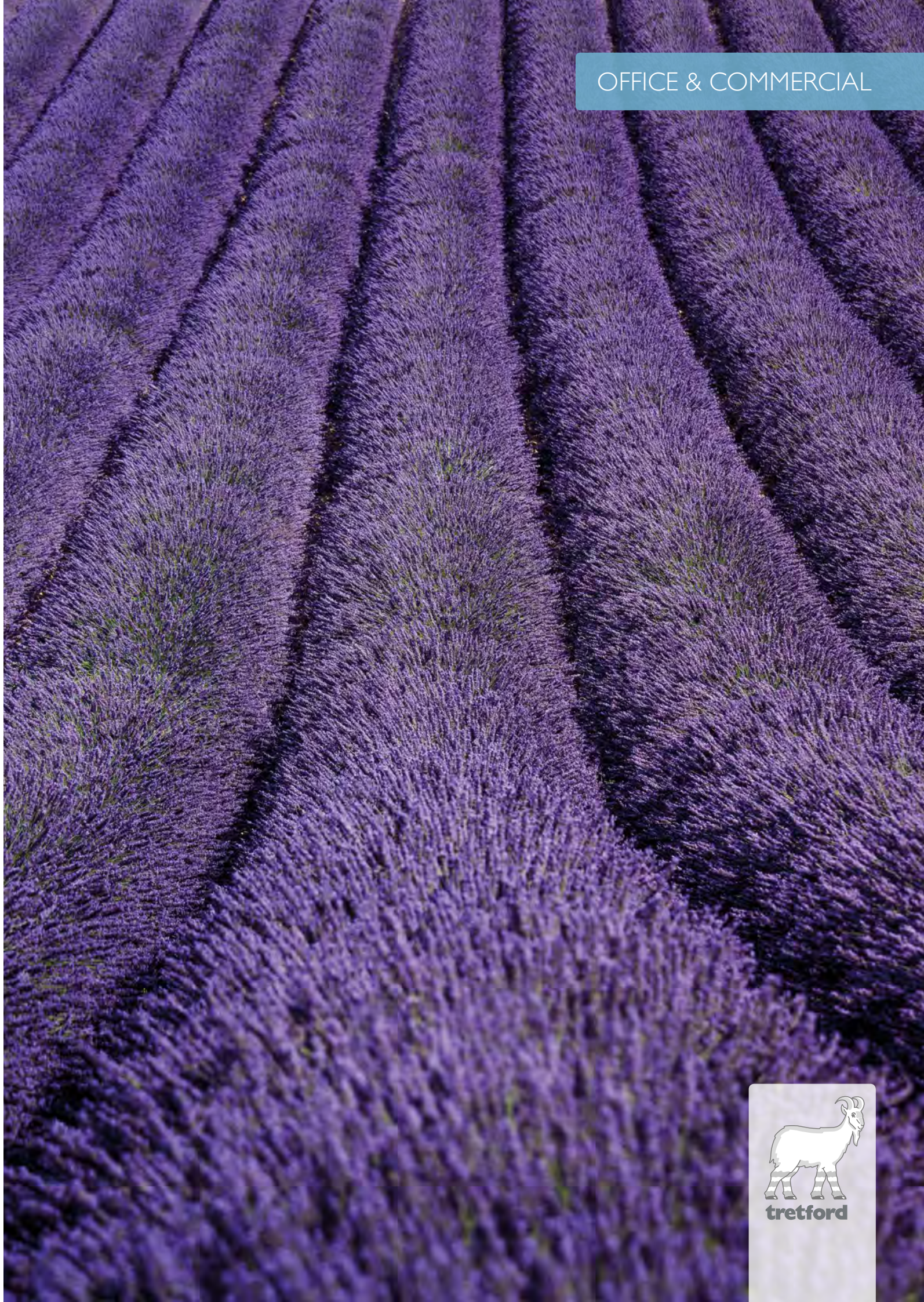


Interlife tiles



custom-designed rug

AkzoNobel Amsterdam | Library De Witte Dame Eindhoven | De Rotterdam Scagliola Brakke



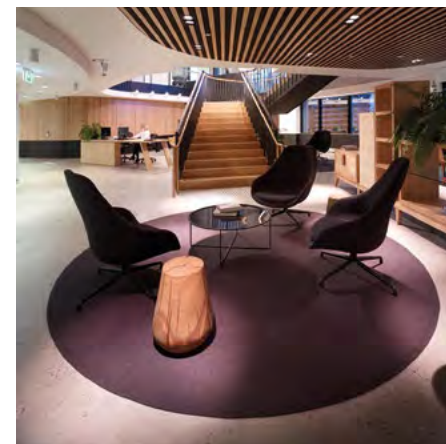
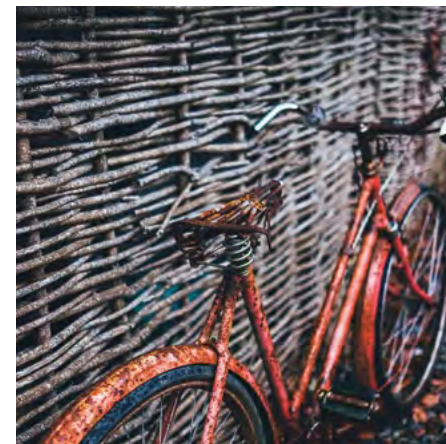
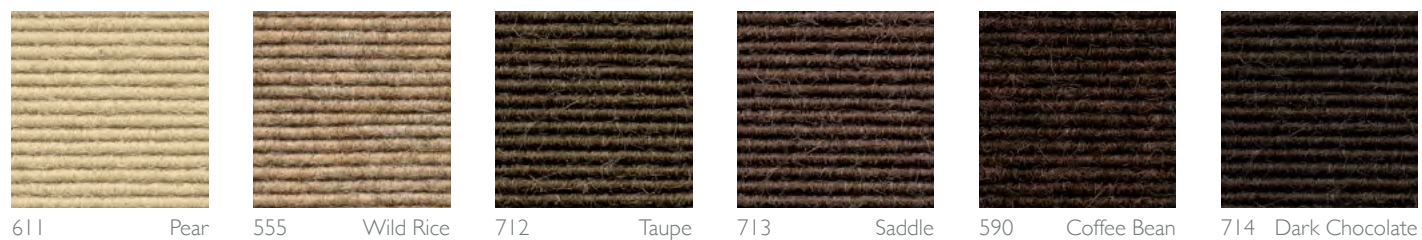


Interlife roll

CONNECTING WITH NATURE

The aim was for this hotel to blend in with the natural environment, be in harmony with nature and the surrounding landscape. An inspiring and beautifully designed interior in which you can distinguish yourself ensures a higher quality experience.

Increasingly demanding guests expect excellent functionality as well as comfort and atmosphere. Your guests will be able to enjoy a healthy environment boasting all the advantages provided by natural materials. Nature's colors and structures give us plenty of inspiration for interior design.



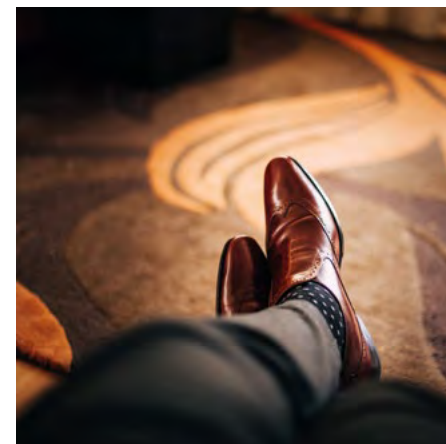
Interlife round area rug



Interlife tiles

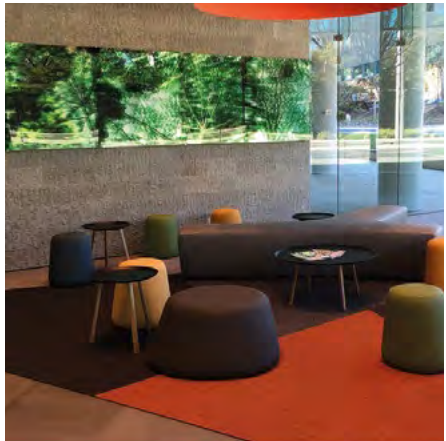
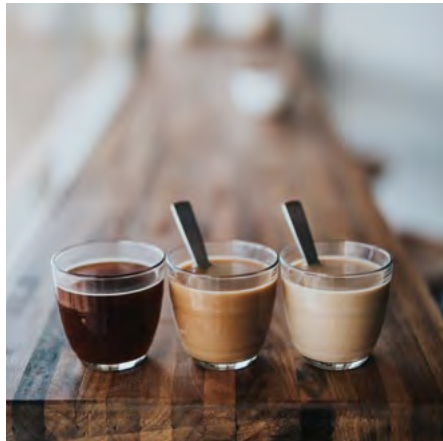


Interlife tiles





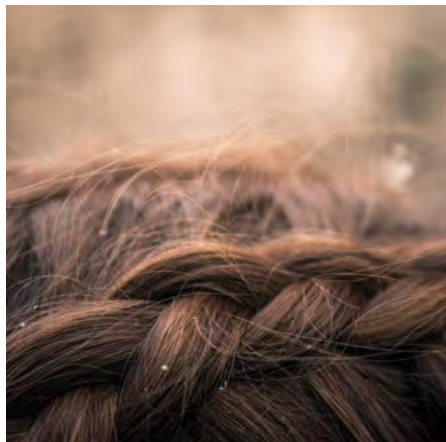
Interlife tiles



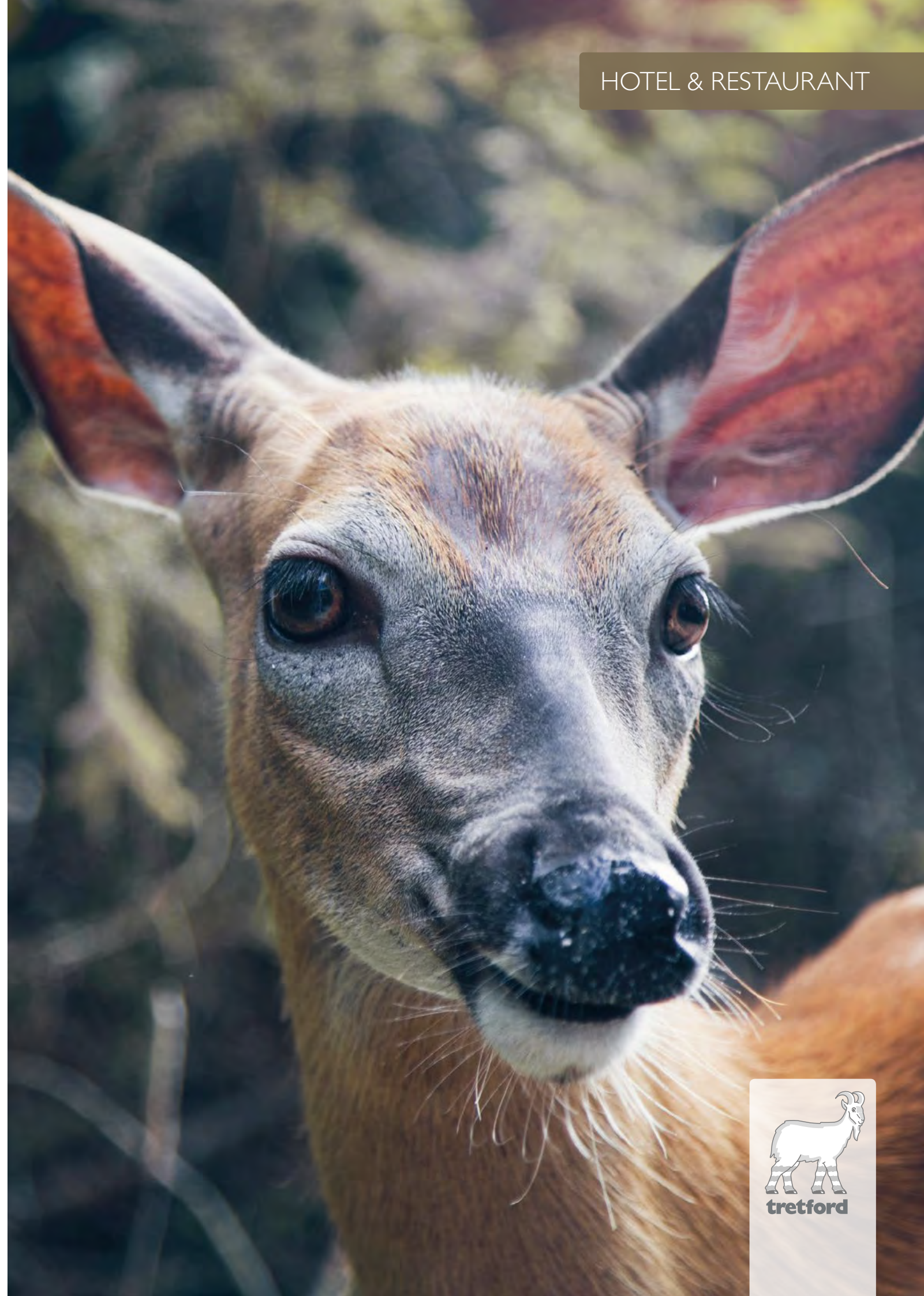
custom-designed rug



Interlife tiles



Juvel Landscape Hotel | Kunstmin | De Rotterdam Scagliola Brakkee | Eosta Waddinxveen




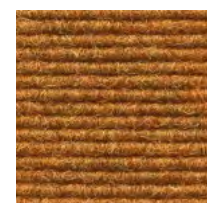
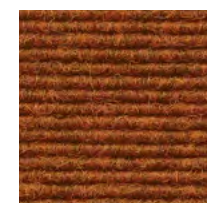





INTERIOR IN TUNE WITH NATURE

Interlife tiles

tretford is the ideal floor covering for the cultural sector. What distinguishes tretford products is their signature ribbed structure and natural beauty: our carpets are like a burst of color reflecting the seasonal palettes of

nature's landscapes and flora. A good interior is like a landscape. Whether you are alone or with people, it always feels good.

- 
568 Jonquille
- 
564 Amber
- 
559 Burnt Orange
- 
572 Milk Chocolate
- 
571 Mushroom
- 
532 Sisal



Interlife tiles



Interlife roll



Interlife tiles

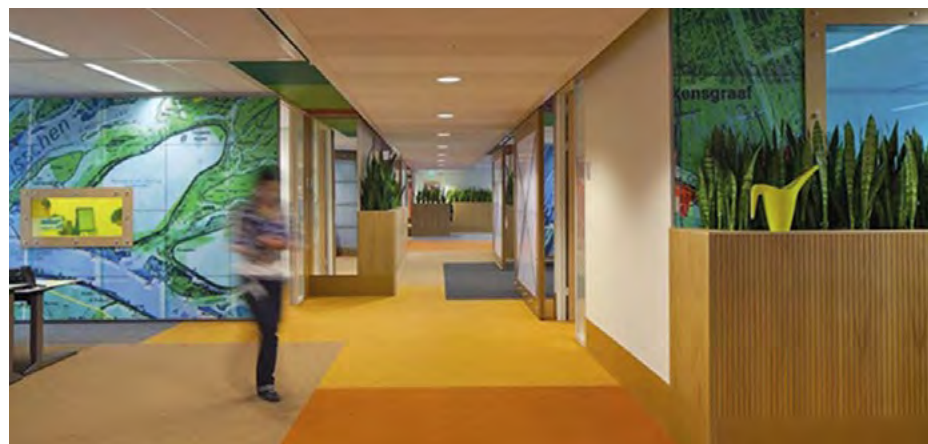




Interlife round area rug



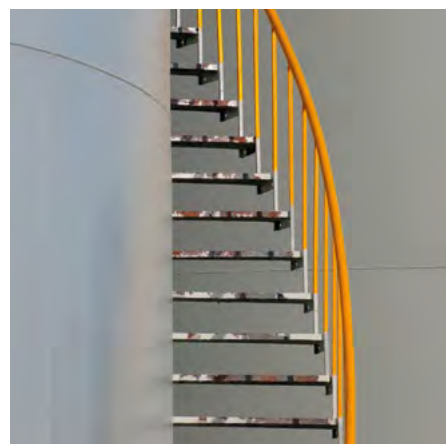
Interlife round rug



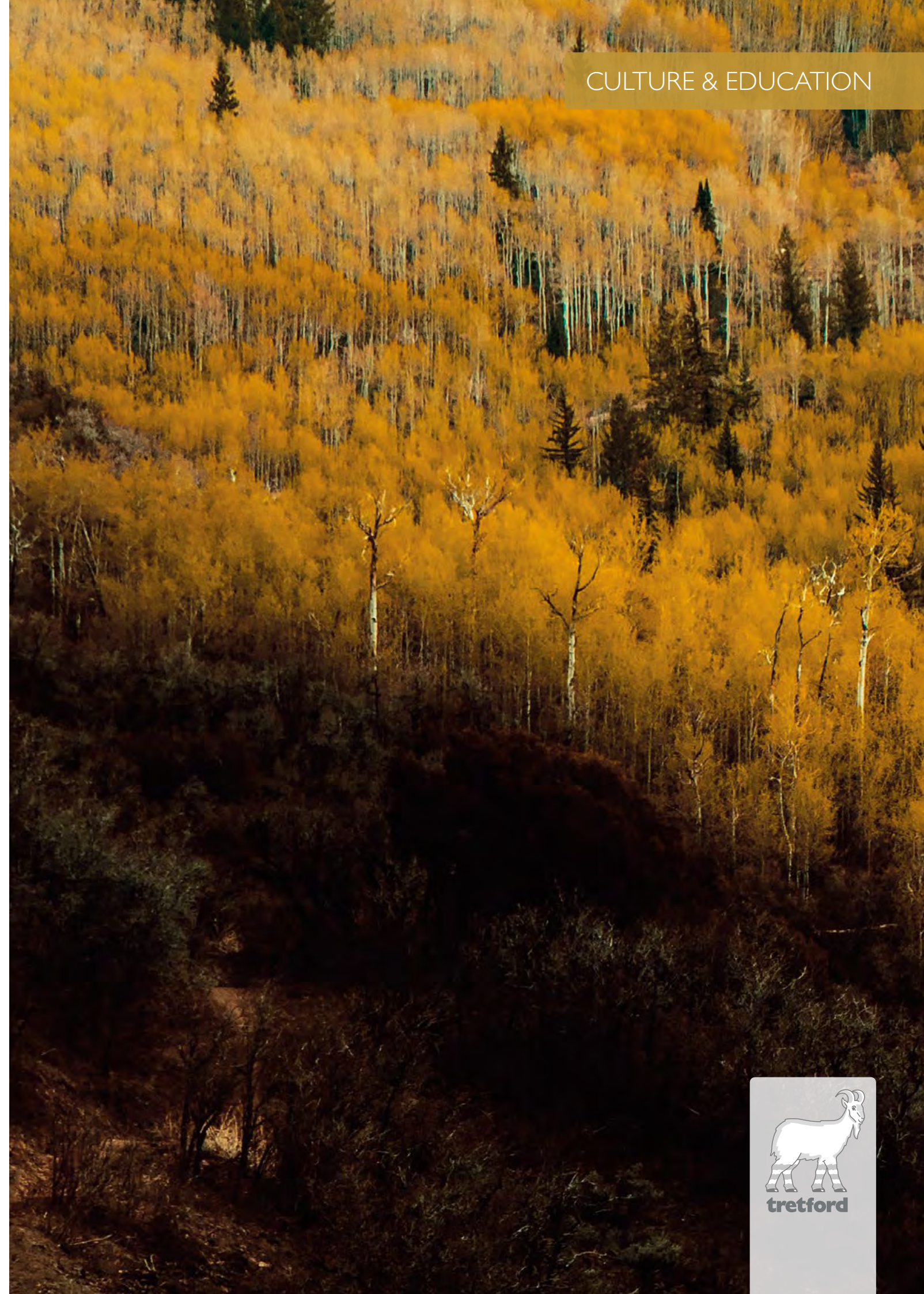
Interlife roll



Interlife roll



Theater Kunstmin Dordrecht | Foundation Hör-undsprachförderung | De Rotterdam Scagliola Brakkee | HW Wentk | Dox Lier | Office DLG Utrecht





PRACTICAL AND IN STYLE

custom-designed rug

The available space in the library needed to be used more efficiently. The aim of the project was to accentuate the industrial character of the library, but it also had to be "pure". To create a more efficient layout, the library is divided into color worlds with a clear routing using primary colors. Pure and simple communication, the art of

omission. Nature inspires our colors and our names for them. These colors or color combinations bring a natural touch of vivid landscapes to this library. Nature and its colors are key to your well-being.



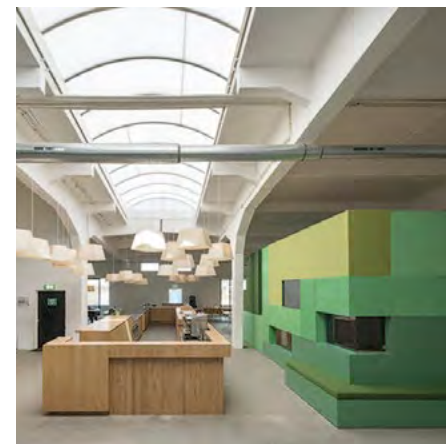
Interlife roll



Interlife roll



Interlife roll

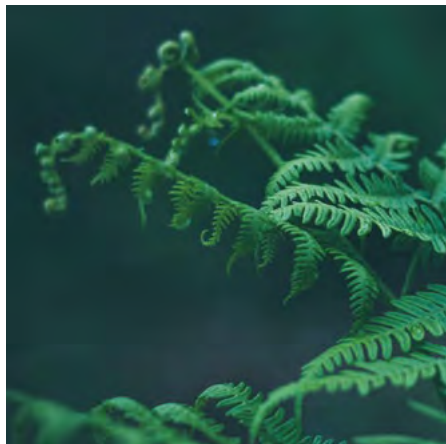




Interlife tiles



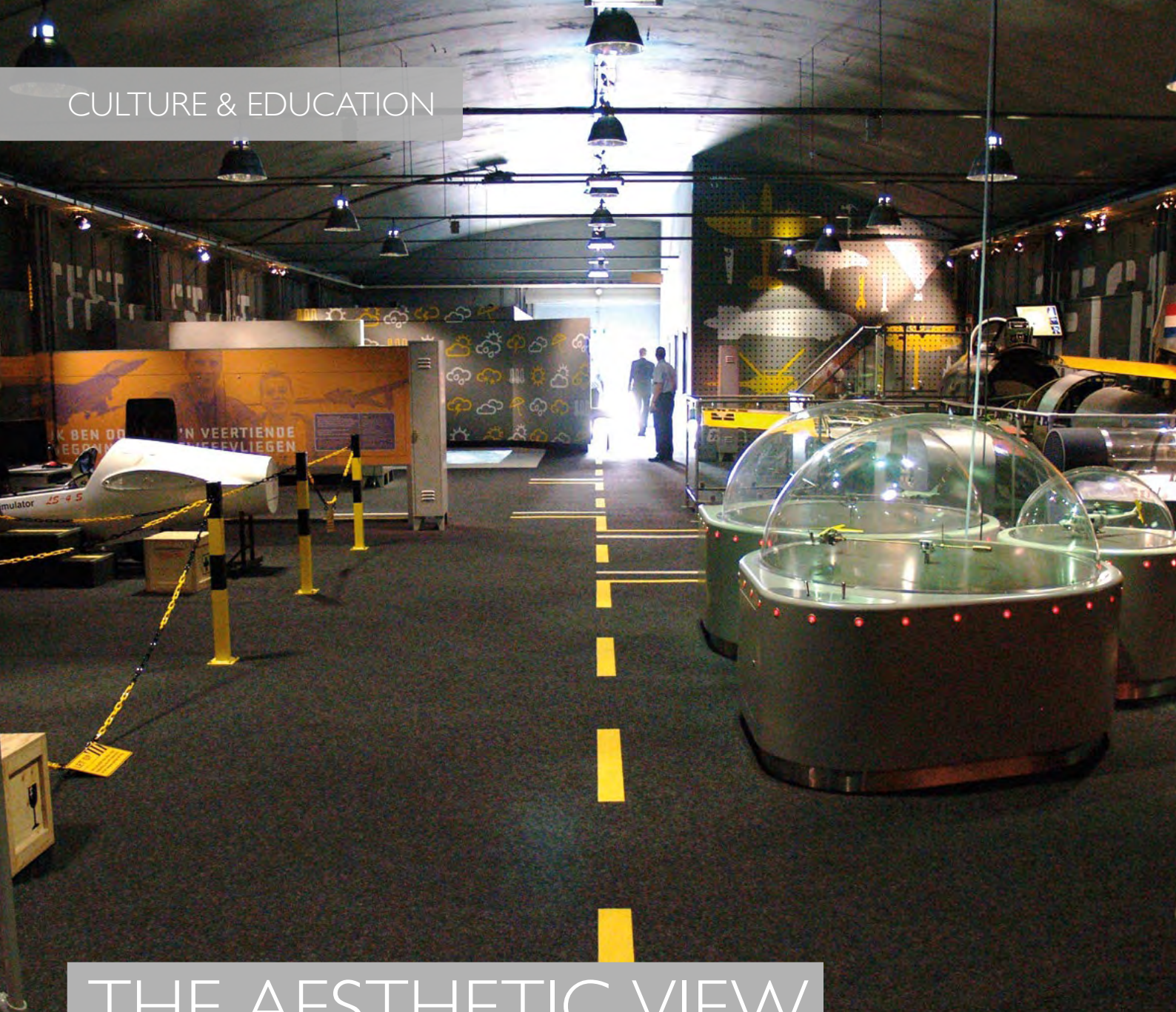
Interlife roll



Interlife roll

Library De Witte Dame Eindhoven | Montessori School | Office Rolf Groep | HW Werk | Headquarters Weseler Teppich Gesellschaft | Office Group A Rotterdam Frank Hanswijk | NGV Triennial





Interlife roll

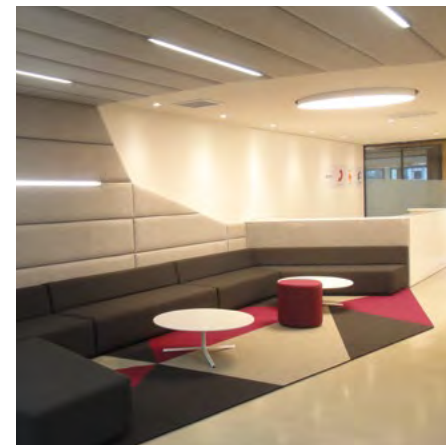
THE AESTHETIC VIEW OF ART

The task of a museum is to convey knowledge, beauty and emotion in an interesting way to make the past tangible to a wide audience. Good acoustics mean having no echo or reverberation.

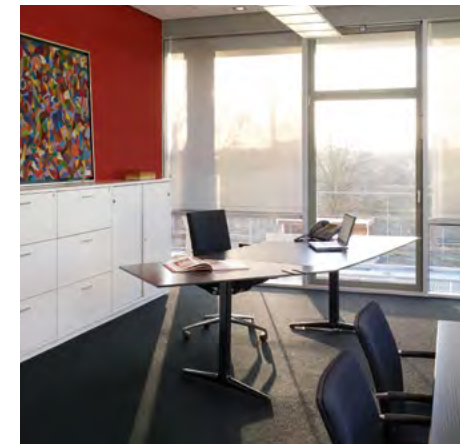
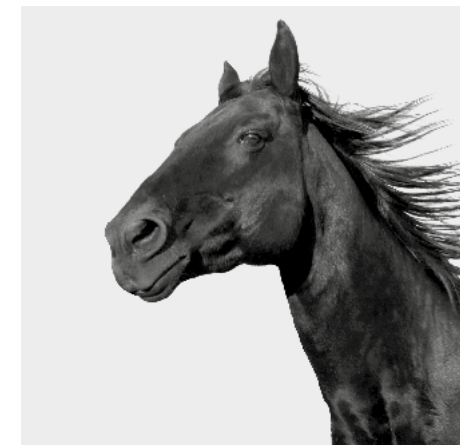
The routing of a museum must also be accessible. It should be a unique, fresh and uncluttered place where you feel welcome and can easily find your way.



515 Silver 538 Silver Birch 523 Zinc 512 Dapple Grey 534 Anthracite 632 Graphite



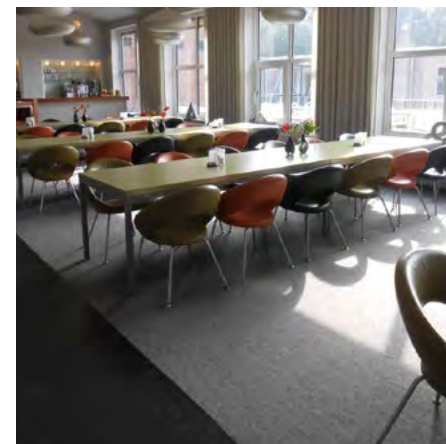
custom-designed rug



Interlife roll

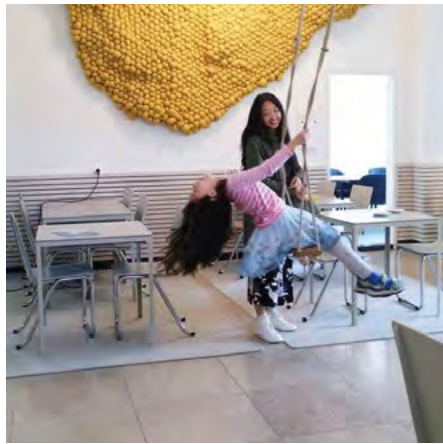


Interlife tiles

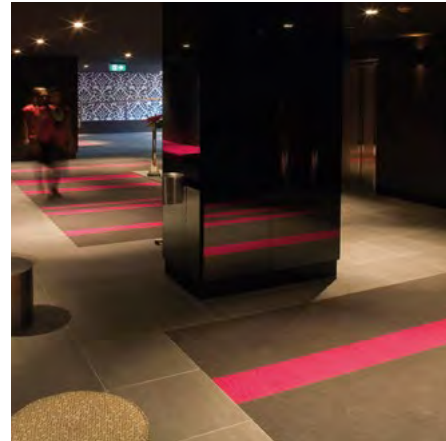


Interlife roll





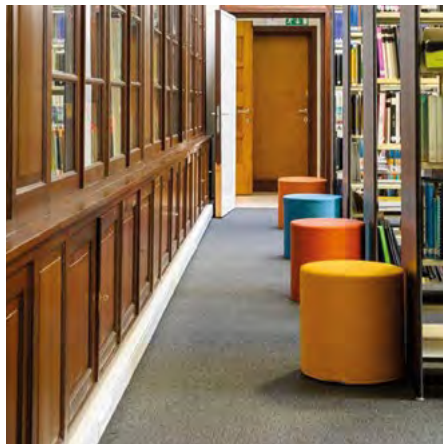
Interlife square carpet



custom-designed rug



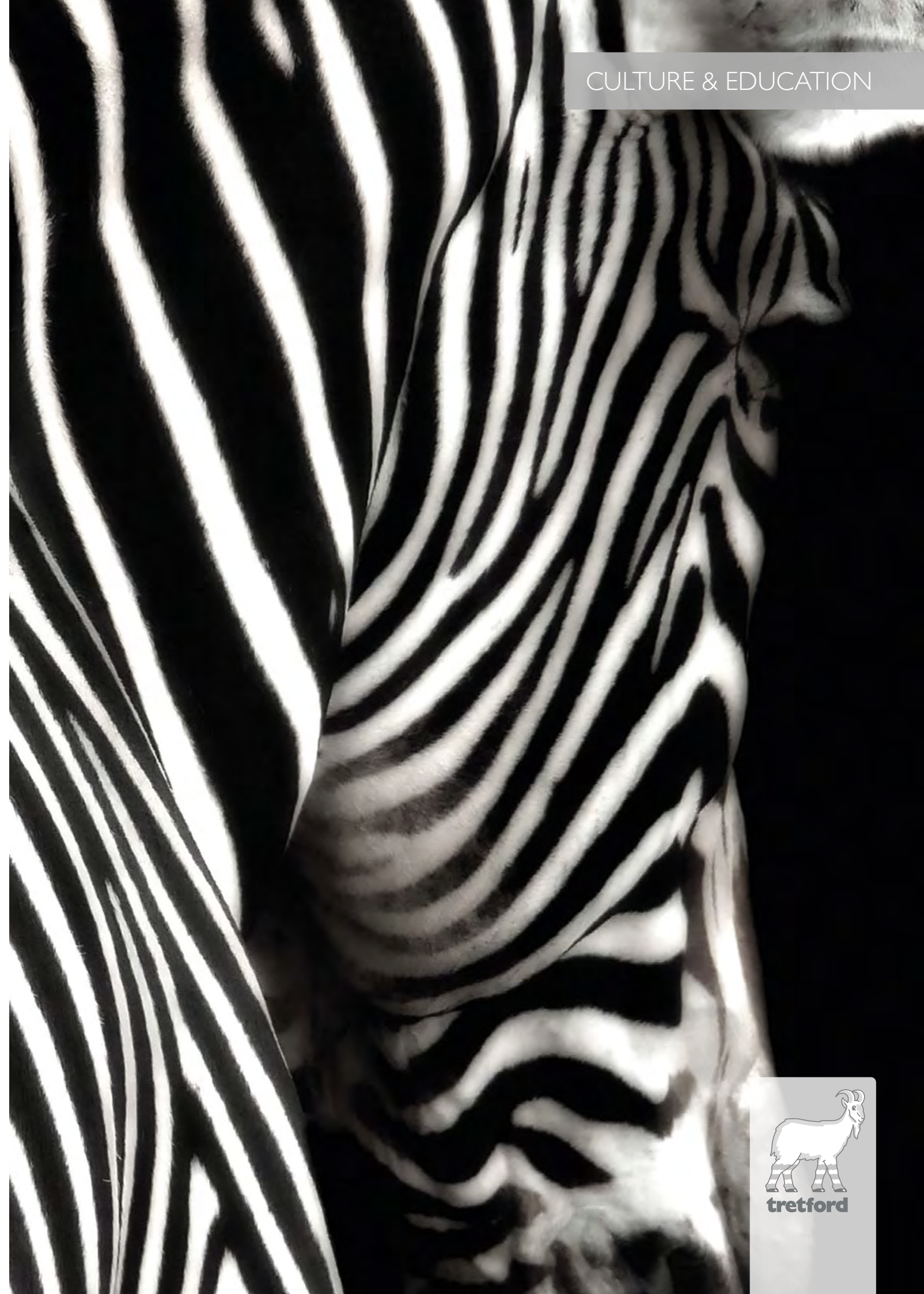
Interlife square carpet



Interlife runner



National Military Museum Soest | Headquarters Weseler Teppich Gesellschaft | Hotel Kapellerput Heeze | De Kleine Campus Arnhem | Dox Lier



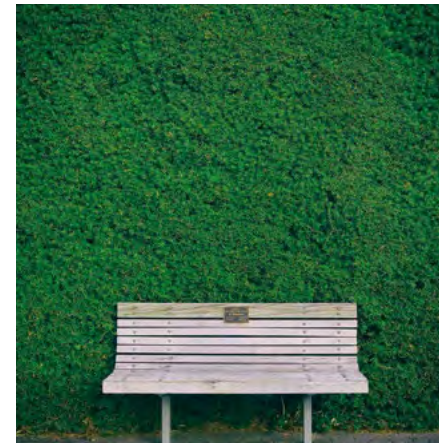


Interlife roll

FRESH AT KINDERGARTEN

The interior has a huge impact on atmosphere, concentration and way of working. Use of color, lighting and furniture all play an important role. A healthy indoor climate is also essential: a fresh school.

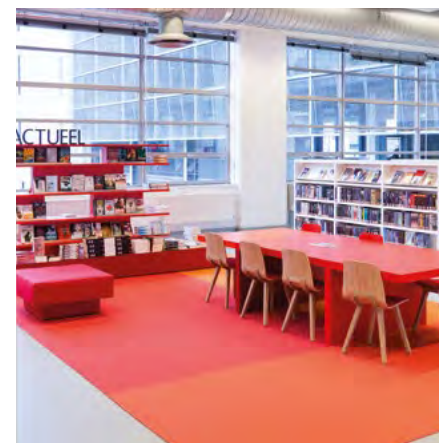
A school must be safe, like a home. A place where children feel comfortable, but is exciting, challenging and stimulating. Colors can create a pleasant working environment which is neither distracting nor dull.



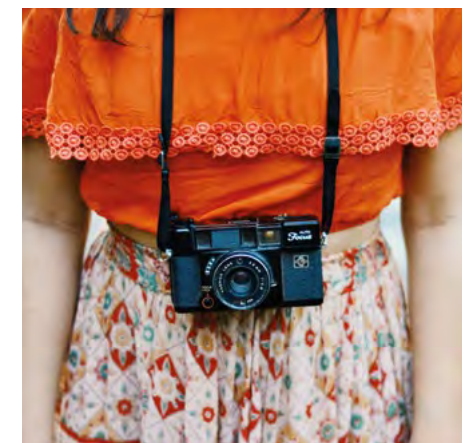
Interlife roll



Interlife roll



custom-designed rug



custom-designed rug



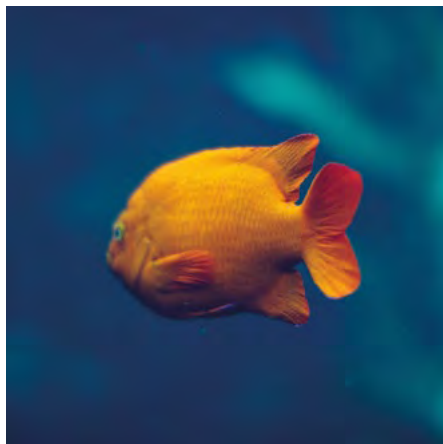
Interlife round area rug



custom-designed rug



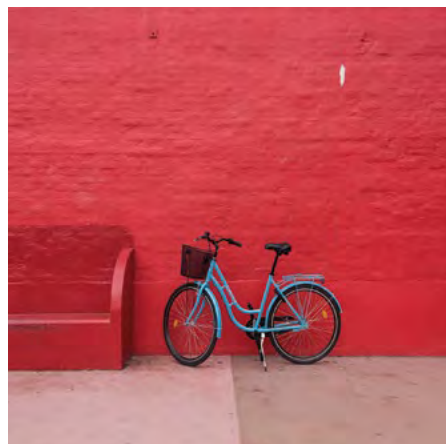
custom-designed rug



Interlife roll



Interlife roll



Dox Lier | Office Rolf Groep | Library De Witte Dame | Montessori School | JoAnn | MoarGut



CUSTOMIZABLE & HANDCRAFTED



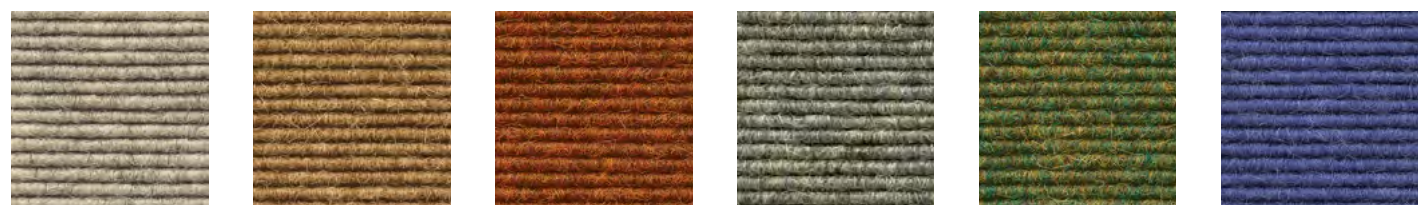
A SENSE OF WELL BEING

AT HOME

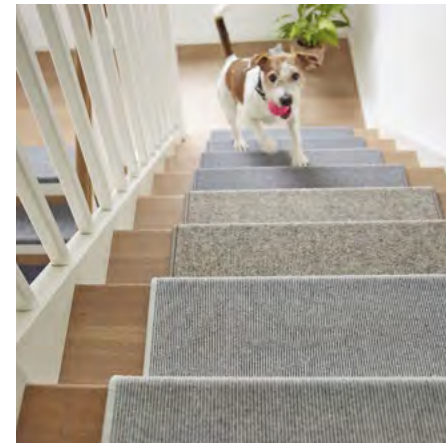
rug with woolfelt border

tretford's product range offers innumerable opportunities to create comfortable living environments. It makes no difference whether you opt for an area rug to break up your parquet flooring or choose wall-to-wall-carpeting or tiles. In each case, you stand to benefit from outstanding durability, noise insulation and a good room climate.

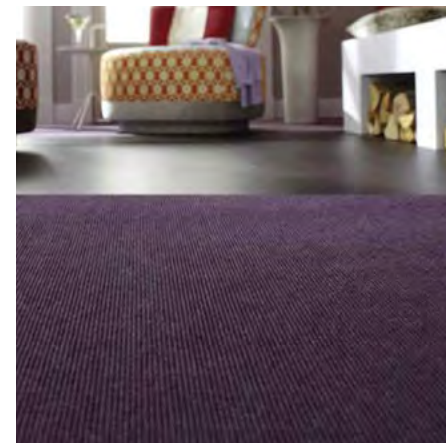
Stay flexible when designing interior spaces by opting for carpet tiles. Our loose-lay carpet tiles can be installed wall-to-wall and enable you to transform rooms with little effort. Let our extensive color palette inspire your creative side.



515 Silver 532 Sisal 559 Burnt Orange 528 Apple 556 Fern 592 Purple



Interlife stair mats rectangular



Interlife roll



Interlife roll



Interlife round rug



Interlife tiles

CUSTOMIZABLE & HANDCRAFTED



Interlife sheet



Interlife roll



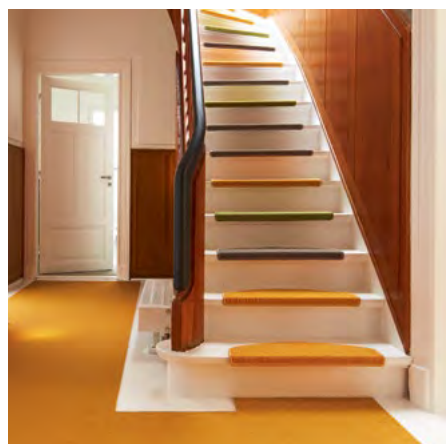
Interart design rug



Interlife round rug



Interlife roll



Interlife stair mats semicircular



INTERLIFE ROLL & TILES



MORE INFORMATION

Cashmere goat hair is the essential component of a tretford rug. This renewable raw material guarantees the unmistakable quality and durability of tretford products along with the radiance of tretford colors. Depending on where the carpet will be deployed, the Cashmere goat hair can be blended with virgin wool or polyamide.

INTERLIFE | for contract and home

Wear rating: strong 33 | suitable for use with castors and stairs

Pile material

70% Cashmere goat hair, 30% polyamide 6

Colors

45 standard colors

Available in

Roll ca. 2 meter wide with jute backing
 Tiles ca. 50x50 cm with fleece backing
 Rugs & runners



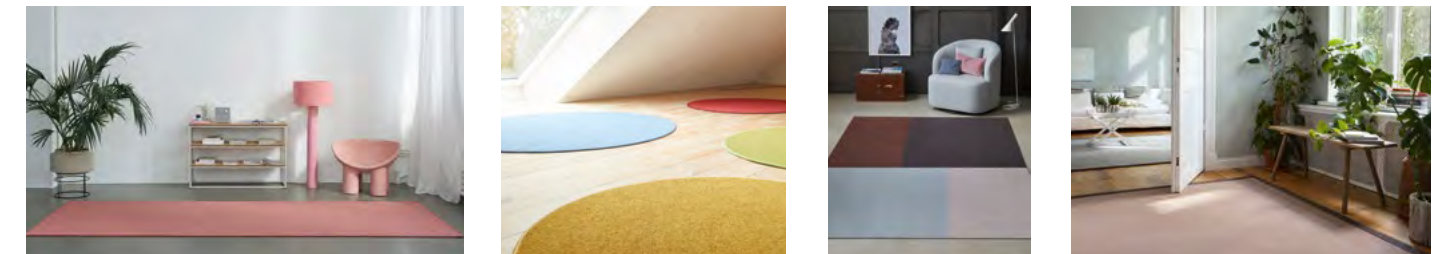
These 45 unique colors are available for roll and 44 colors for tiles (with 70% Cashmere goat hair, 30% polyamide), for heavy commercial use but also for private residences.

Color deviations compared to collection are possible. Stand 04/24, subject to change without notice. Our qualities are produced according to the proven ondulé principle, which gives it its characteristic structure and the quality won't fray.

Detailed technical data can be found at www.tretford.us. You can also request color samples there.

AREA rugs

Our carpets – round or square – come with or without edging or an individualized design. Thanks to their natural pile material consisting of Cashmere goat hair and virgin wool, they are warm, cheerful and durable. Put one to work in your favourite spot at home, at a daycare center, a hotel or a sales room. INTERART rugs are precision-handcrafted in Germany. They are available in a broad color spectrum that leaves nothing to be desired.



Weseler Teppich GmbH & Co. KG | Emmelsumer Str. 218 | D-46485 Wesel
 Tel. +49 (0)281 819580 | sales@tretford.us | www.tretford.us





MADE IN GERMANY



Weseler Teppich GmbH & Co. KG
Emmelsumer Str. 218 | D-46485 Wesel
Tel. +49 (0)281 819580
sales@tretford.us | www.tretford.us



@tretfordcarpet



www.tretford.us